

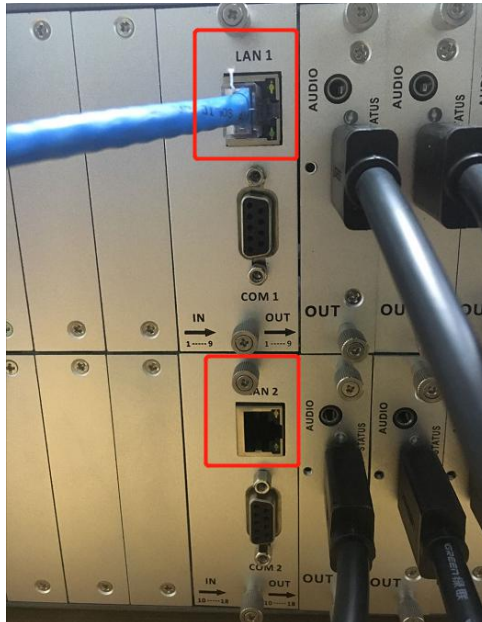
Upgrade Steps for Card Cages

1. Make sure have a LAN cable well connected between the matrix and control PC.
2. As there are 2 LAN ports on the back panel of the matrix, and the default IP address are:

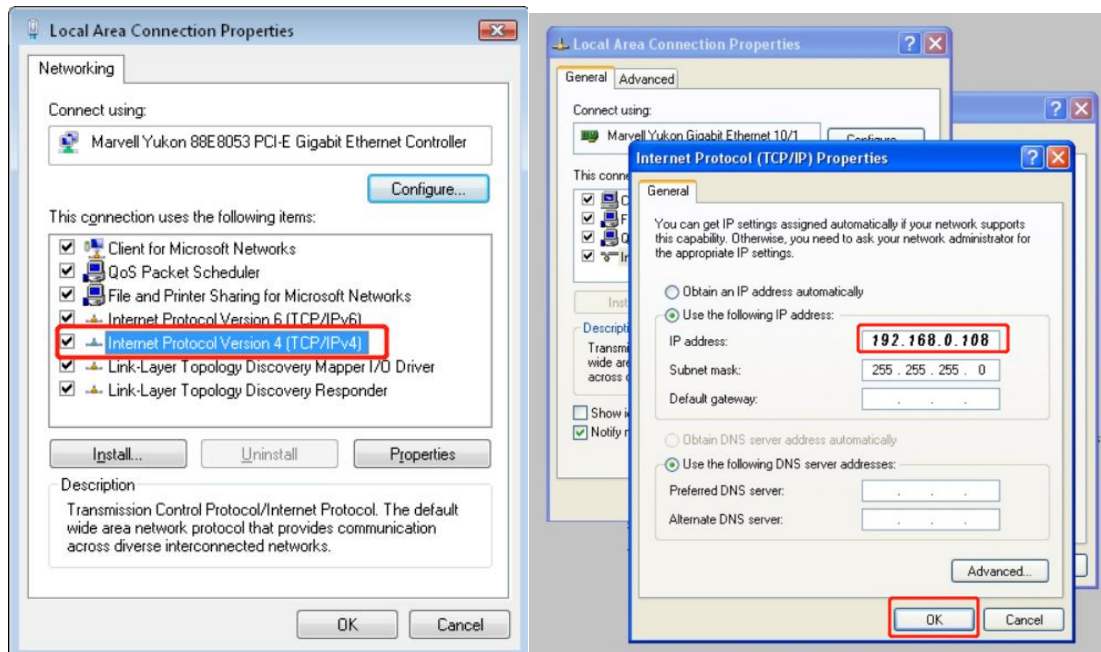
LAN 1 IP: 192.168.0.80

LAN 2 IP: 192.168.1.80

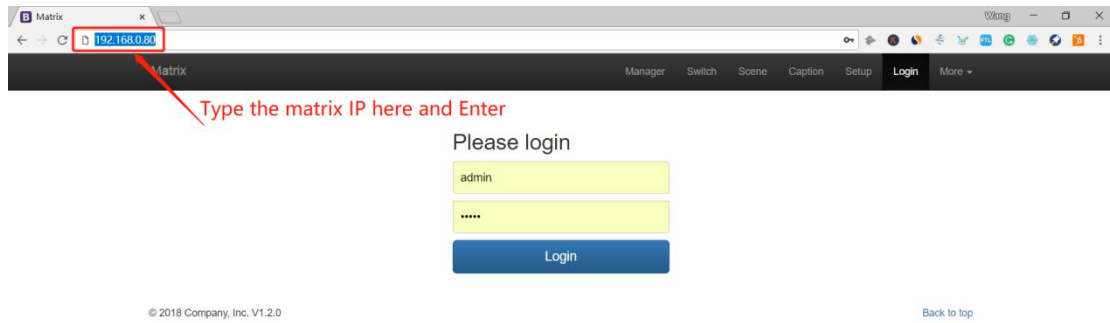
Select the LAN port on the Matrix, here we use the **LAN 1(192.168.0.80)**



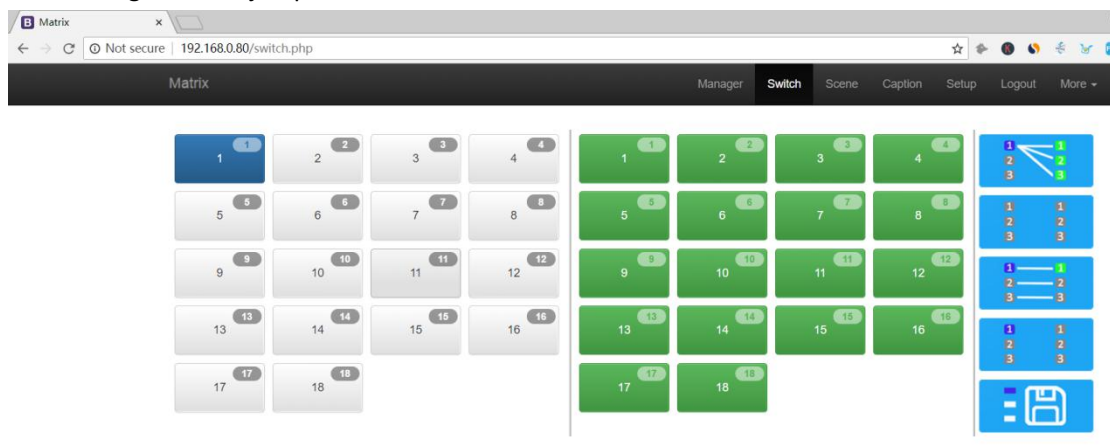
3. Need to make sure the IP address of the control PC and matrix are in the same range:



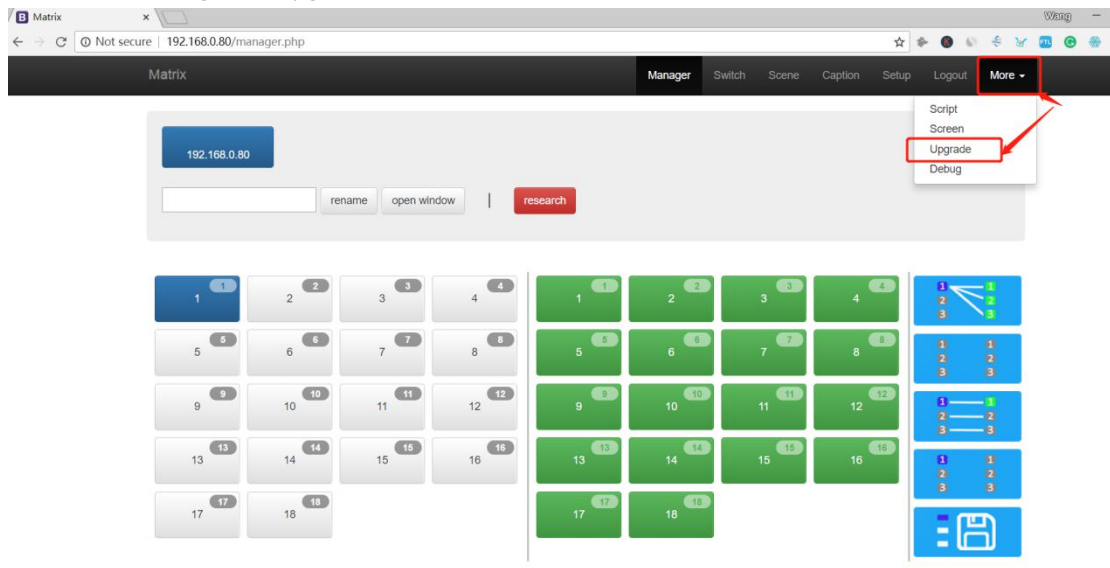
4. Type the matrix IP address(LAN1:192.168.0.80) in a WEB browser and enter, then Log in with the
User name: admin
Password: admin



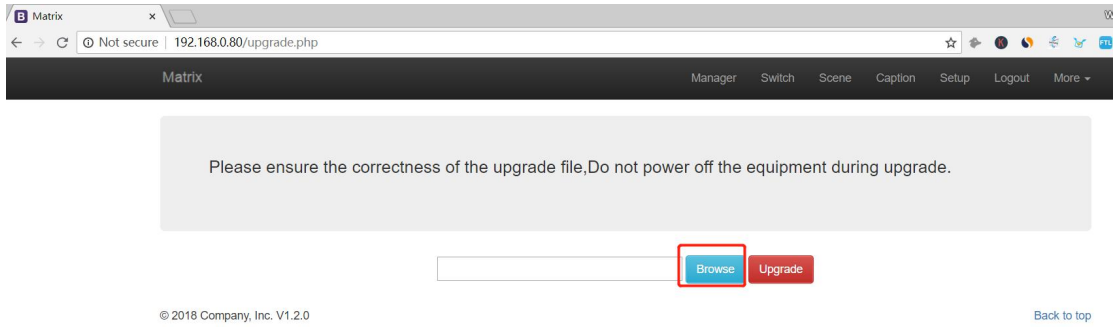
5. After log in, it will jump to “Switch” interface:



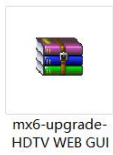
6. Click “More”, go to “Upgrade” and click:



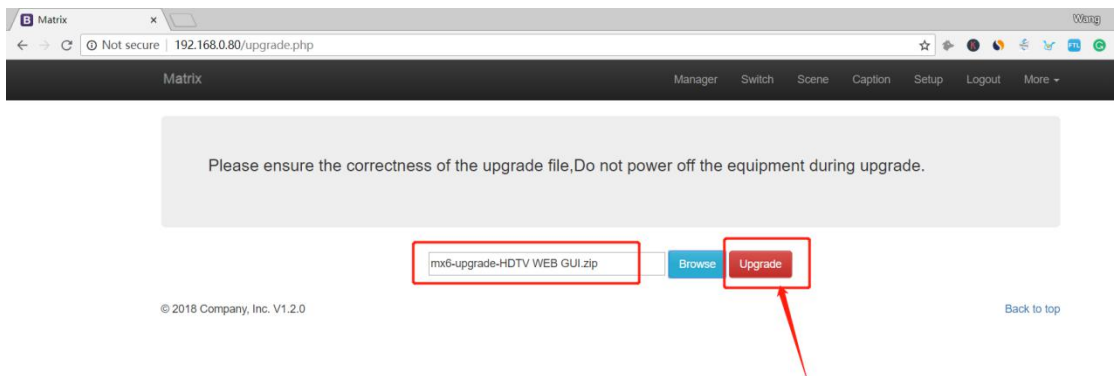
7. After click “Upgrade” it will show:



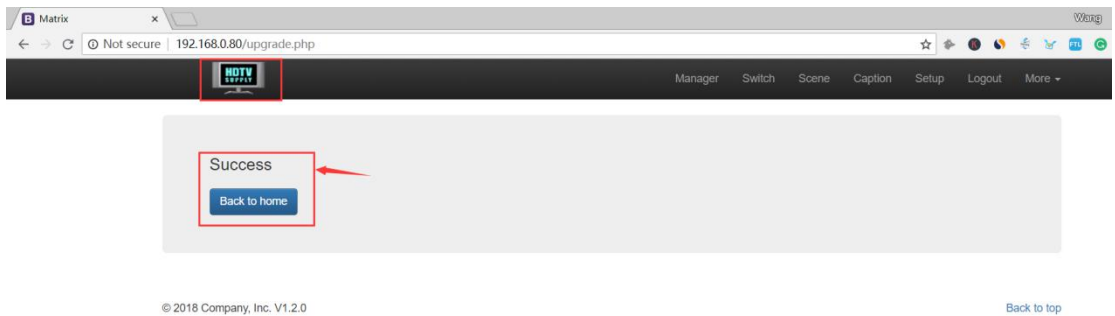
8. Click "Browse" to find the firmware, and click "Upgrade" to continue



mx6-upgrade-HDTV WEB GUI



9. Will hear a beep sound and show a success interface as below:



10. Click Back to home and upgrade is done.

1	2	3	4	1	2	3	4	1	2	3
5	6	7	8	5	6	7	8	1	2	3
9	10	11	12	9	10	11	12	1	2	3
13	14	15	16	13	14	15	16	1	2	3
17	18			17	18			1	2	3

x: y:

X	X	X	X
X	X	X	X
X	X	X	X