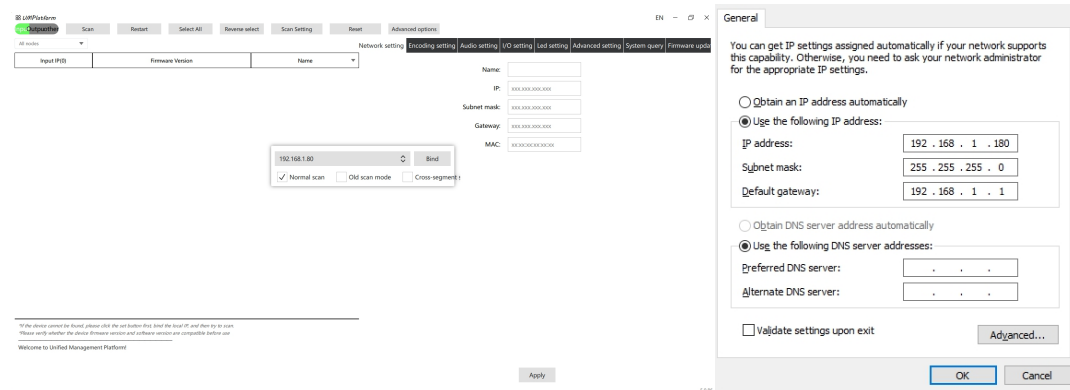


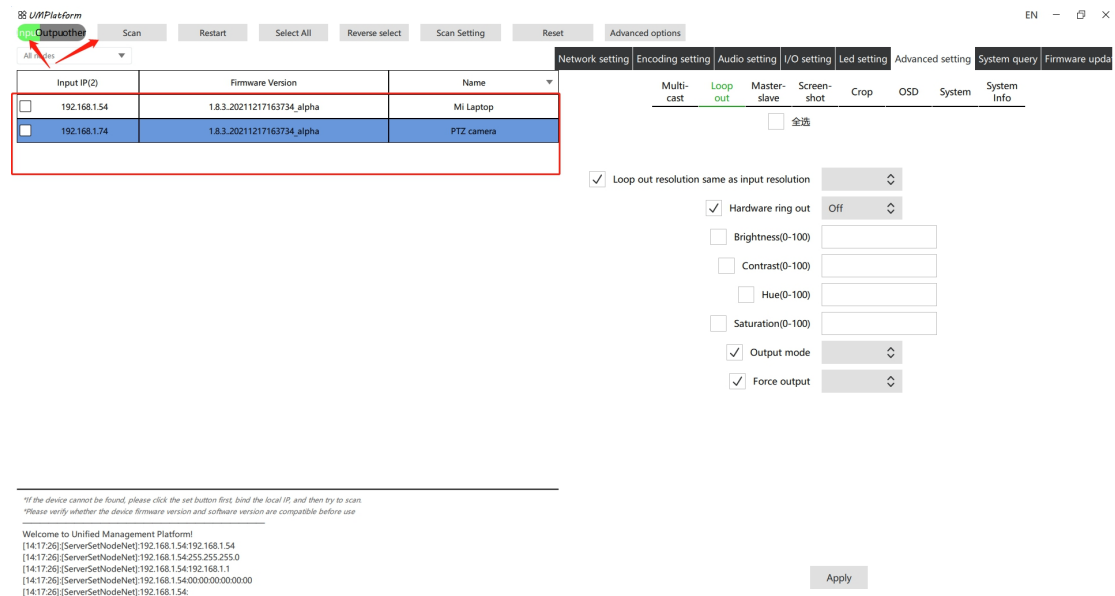
## UMPlatform Operation Guide

This software is mainly for the devices settings:

**Step 1:** Scan settings, mainly to bind the control computer IP address with this setting software, here take the computer IP address is 192.168.1.180:



**Step 2:** Click the Input, then hit the “Scan” button, it will show all the available nodes on the list. Now users can change the names, resolution, audio, I/O, OSD etc functions from the right side:



**Step 3:** Click the Output, and then “Scan” to do any settings for all the output nodes. After done the settings, the software will show a pop-up window for the operation status or showing to restart the devices which just set.

\*If the device cannot be found, please click the set button first, bind the local IP, and then try to scan.  
\*Please verify whether the device firmware version and software version are compatible before use.

Welcome to Unified Management Platform!  
[14:17:26][ServerSetNodeNet]:192.168.1.54:192.168.1.54  
[14:17:26][ServerSetNodeNet]:192.168.1.54:255.255.255.0  
[14:17:26][ServerSetNodeNet]:192.168.1.54:192.168.1.1  
[14:17:26][ServerSetNodeNet]:192.168.1.54:00000000000000  
[14:17:26][ServerSetNodeNet]:192.168.1.54

U/MPlatform

Input Output other Scan Restart Select All Reverse select Scan Setting Reset Advanced options

All nodes

Output IP(5)	Firmware Version	Name
<input checked="" type="checkbox"/> 192.168.1.29	3.18.8.20211214142544_alpha	null
<input type="checkbox"/> 192.168.1.51	3.18.8.20211214142544_alpha	null
<input type="checkbox"/> 192.168.1.59	3.18.8.20211214142544_alpha	null
<input type="checkbox"/> 192.168.1.66	3.18.8.20211214142544_alpha	null
<input type="checkbox"/> 192.168.1.69	3.18.8.20211214142544_alpha	null

Network setting Audio setting Color setting I/O setting Led setting Advanced setting System query Firmware update

Name: null

IP: 192.168.1.29

Subnet mask: 255.255.255.0

Gateway: 192.168.1.1

MAC: 00:00:00:00:00:00  
86e54a67b2a9

\*If the device cannot be found, please click the "scan setting" button to bind the local IP and then click "scan" again  
\*Please verify whether the device firmware version and software version are compatible before use

Welcome to Unified Management Platform!

Apply

These are the most main steps on this setting software, for the other settings will be setup accordingly to the actual needs.