

Windows PC Control Manual

IPM-920T & IPM-920R

Broadcast 2K@60 AV over IP Extender Matrix System



System Control

Users are able to control this AV over IP system via the iPad APP(recommended for the daily switch) or the by Windows Control Software(for the system settings), below is the Windows control operation guide, please note that the Windows PC control will need add the optional IP Control box in the system.

Windows PC control software will be including 2: one if the configuration and for the control/switching

Configuration Software:



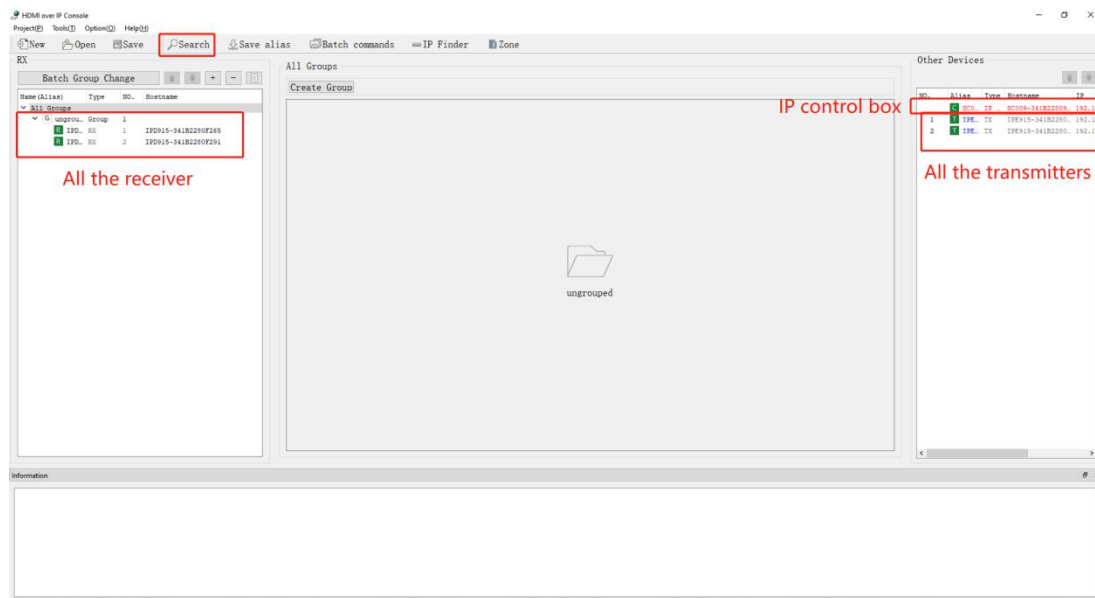
Control/Switch software:



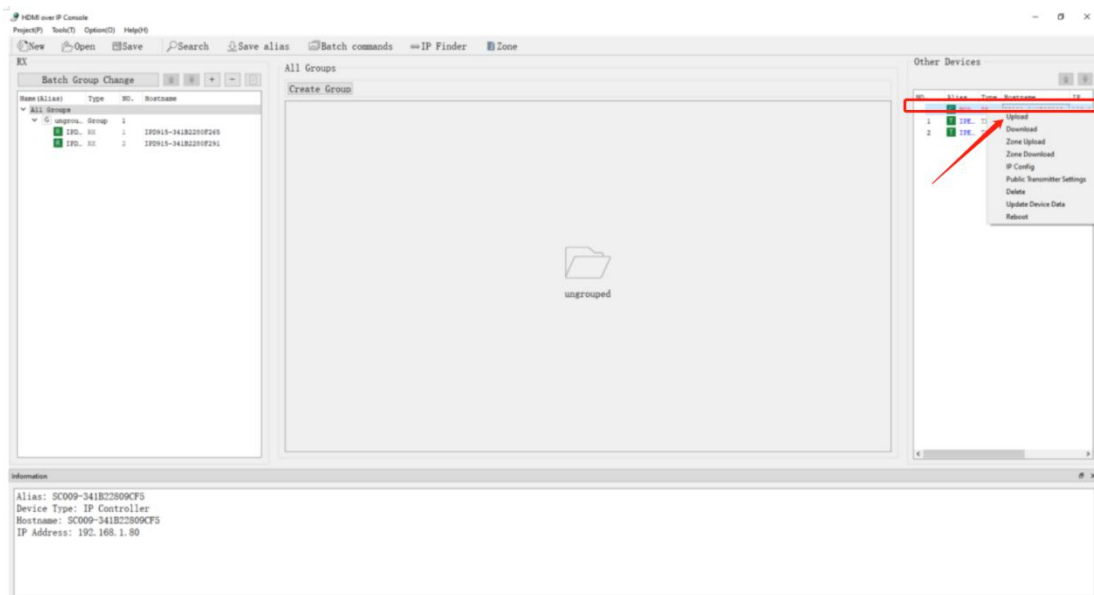
Step 1: Make sure the Windows control PC connected to the same POE switch with the AV over IP system.

Step 2: Use the “HDMloverIPConsole” software to configure and upload the settings to the IP control box.

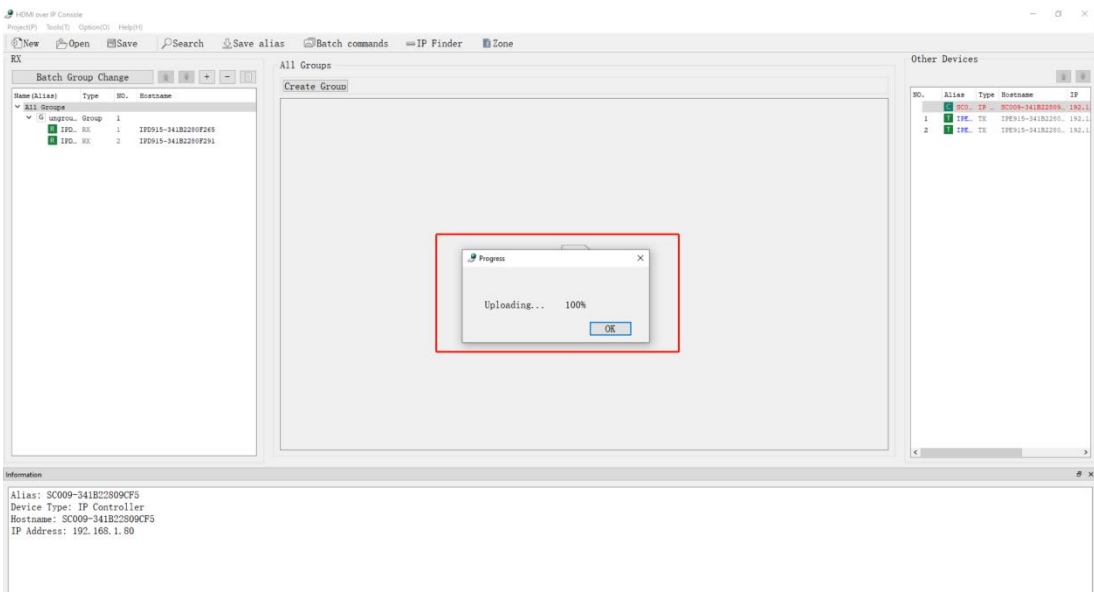
1.Click “Search” to find all the transmitter, receiver and IP control box which shows as below:



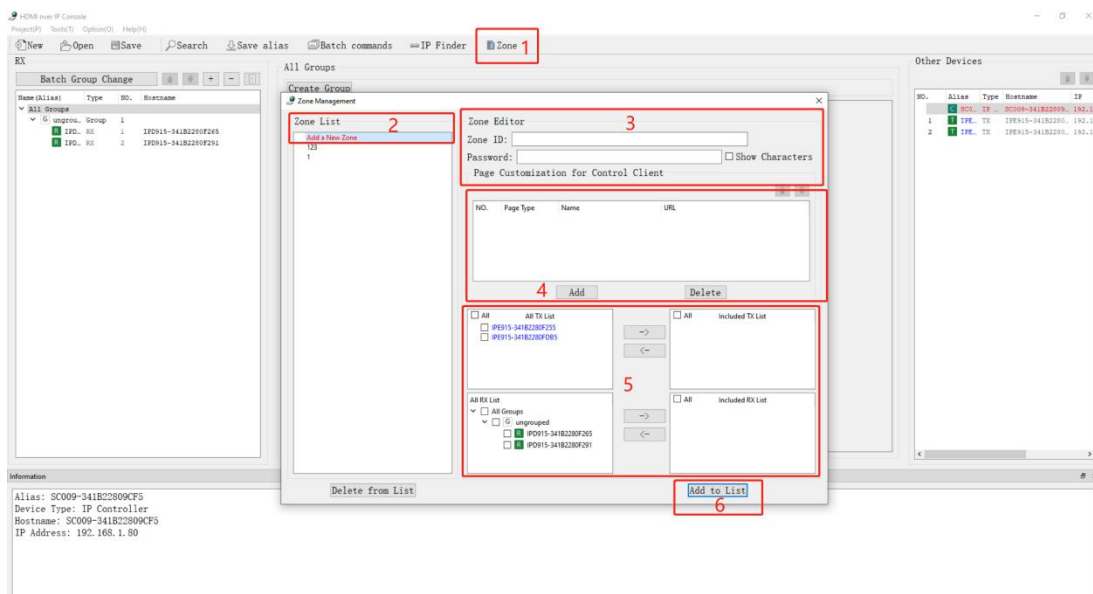
2. After find all the connected Transmitters, Receivers and the IP control box, will need to use the right click on the “IP control box” to upload the configuration:



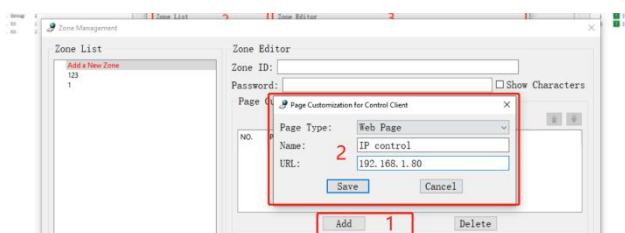
3. After click upload, it will take about a minute to upload, until it shows: uploading 100%.



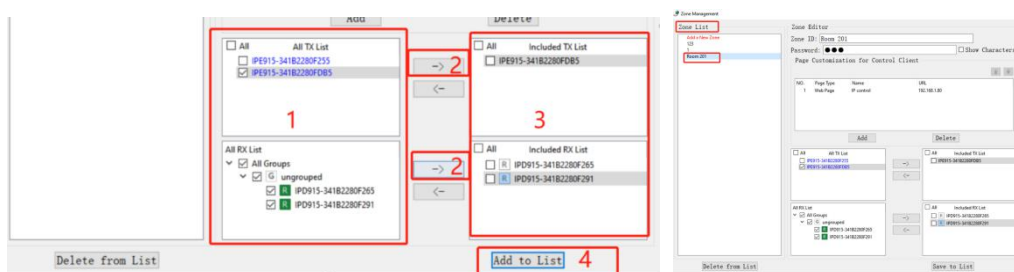
4. Then click "Zone" to add different users with different rights to control/manage



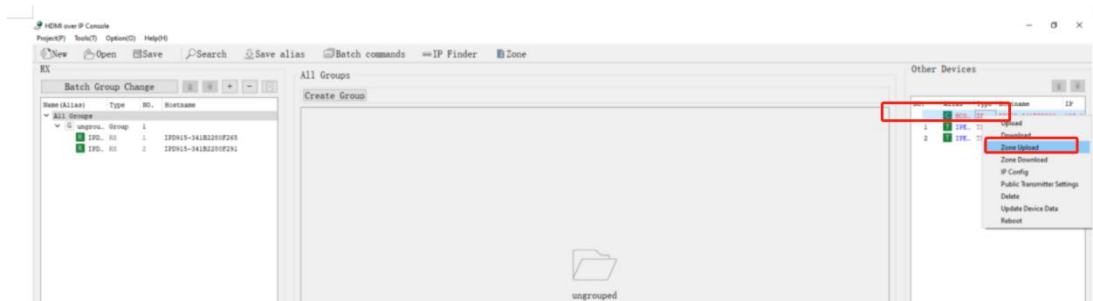
Note: For the number “4” on the above screenshot, users need to add the IP control box IP as the Url.



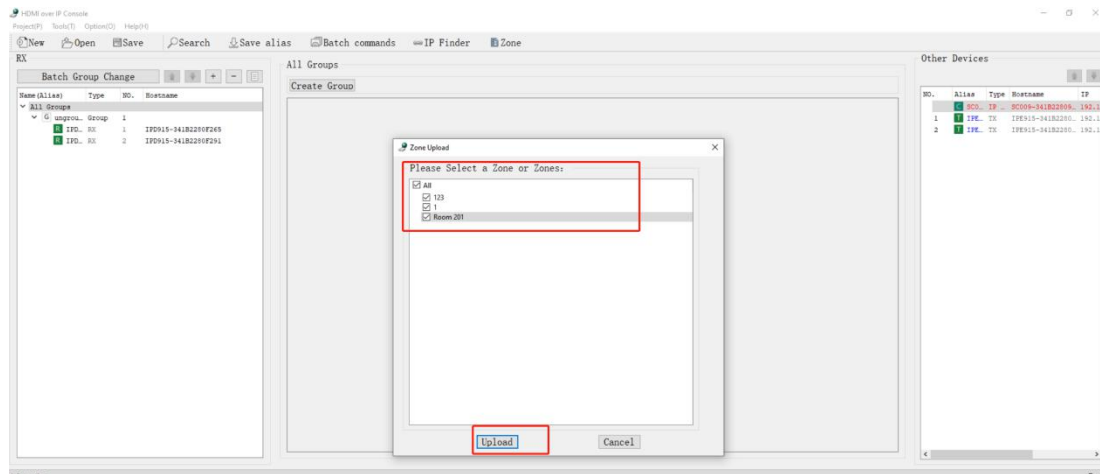
Then can select the specific transmitters or receivers from the left side, and click “2” to add them under this user’s right, and can find this on the Zone list on left side:



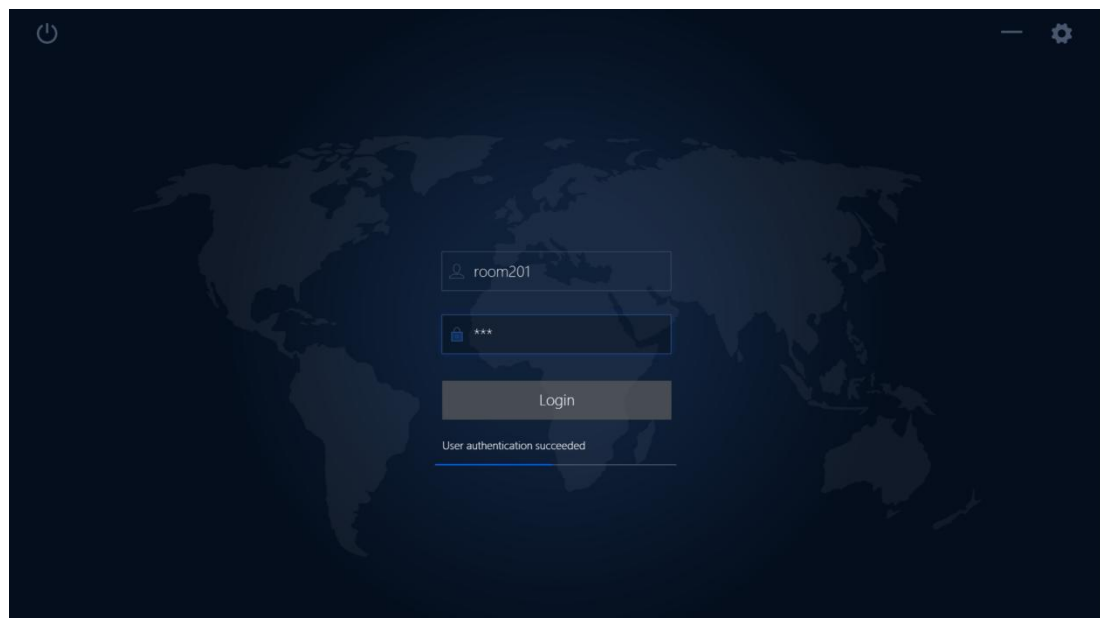
After added the New Zone on the Zone list, will need to back to main interface to upload the new zone as below by right click on the IP control box:



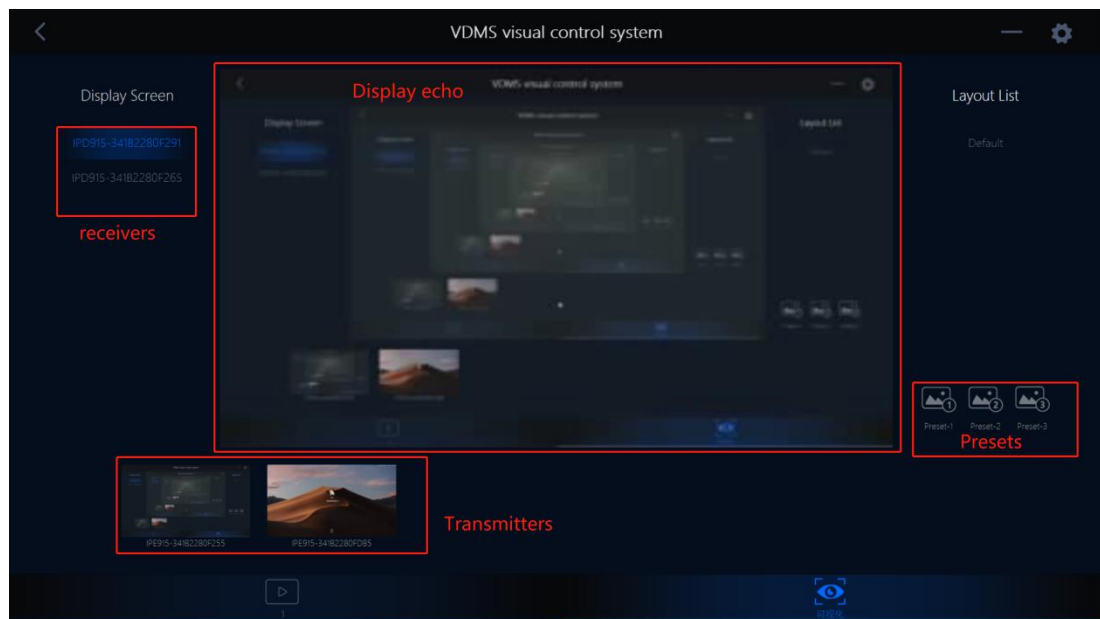
If there are multiple zones, also can select all or partial to upload:



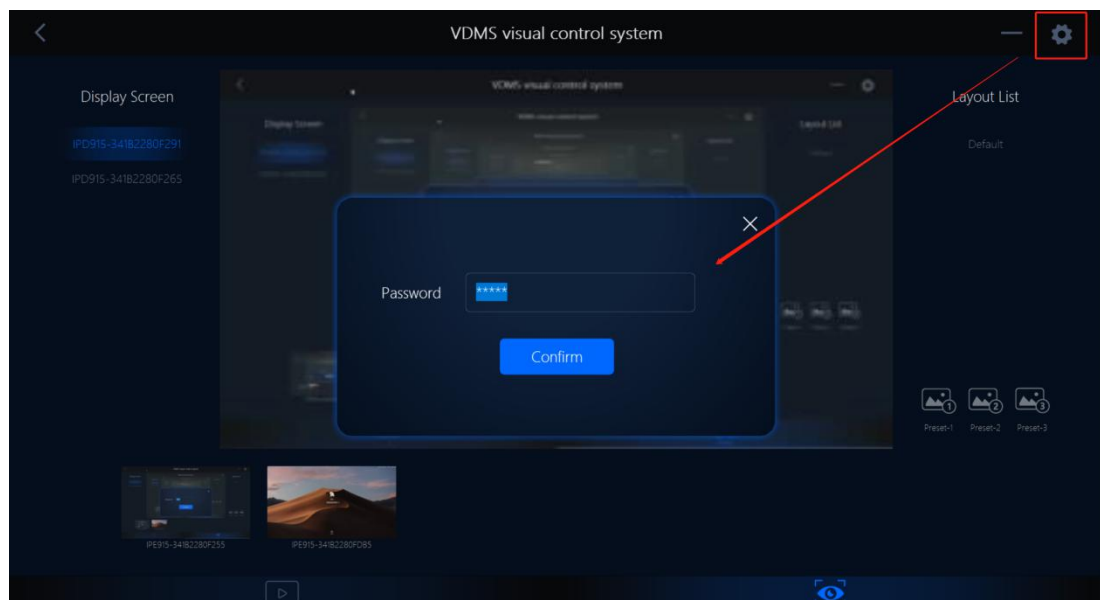
After the Zone uploaded successfully, then can use the second Windows software(VisualDMS-V1.0.9) to Login with specific Zone name for the specific control:



After login, it will be showing as below:



Setting Icon, the default Password is admin



After enter the password(admin), users can change the IP control box IP address, password, language and the version information.

<

VDMS visual control system

Address setting

Password setting

Language setting

Version information

Control server address

192 · 168 · 1 · 80

Save